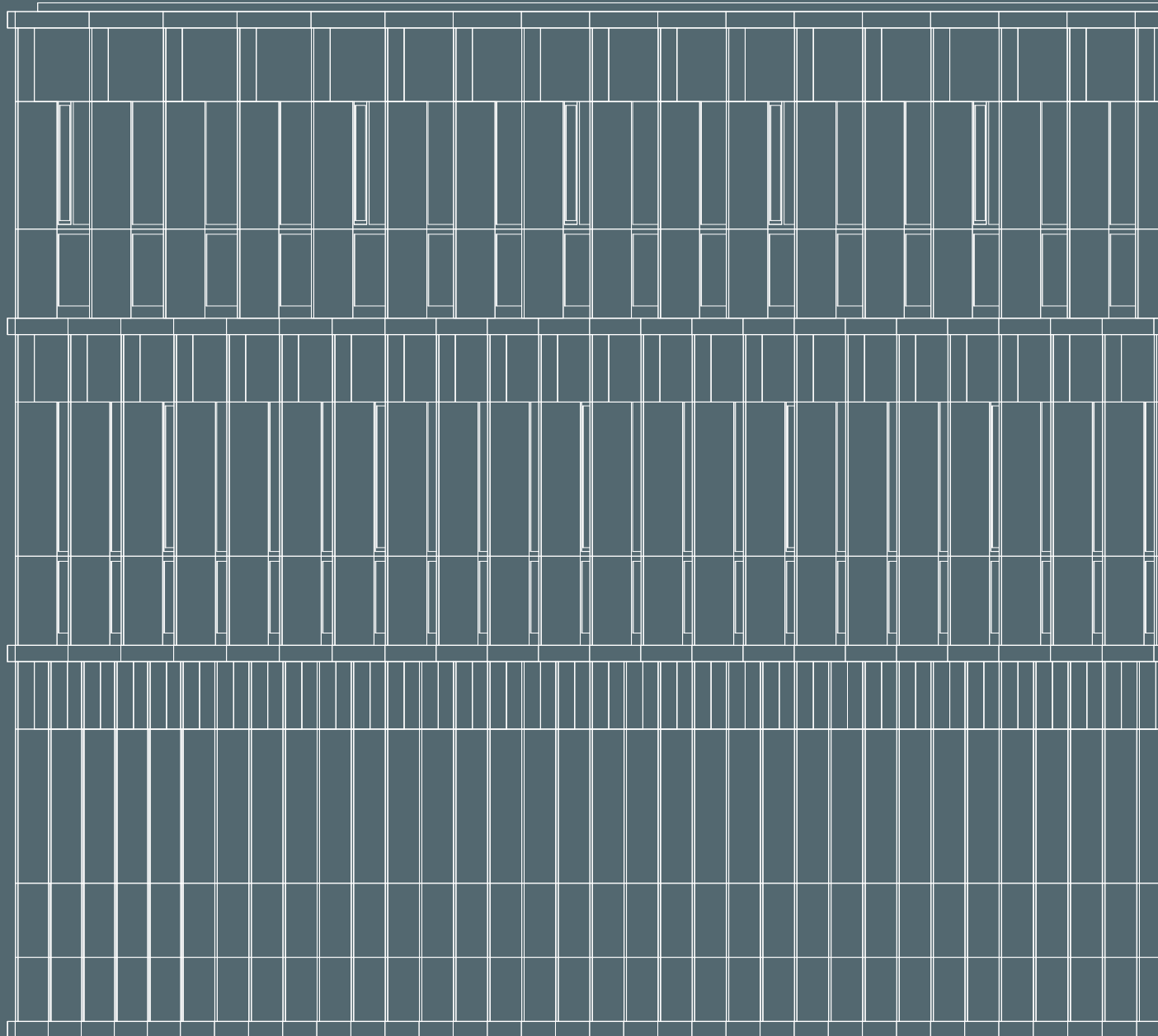




pulse

www.pulse.swiss

Indicative Building Plans




DEVELOPED BY

EPIC SUISSE

Situation Plan and HGV Access




Tratrix curves

Floor Plan Ground Floor



TECHNICAL SPECIFICATIONS

Ceiling height
5.80 m

Floor load
2 t/m²

- Rental area (A: 3,476 m²/B: 3,365 m²)
- Lifts and staircases
- Logistic area
- Concierge
- Terrace
- Tank storage (O₂, N₂, CO₂, etc.)
- Waste compactors
- Entrances
- Access to cargo lifts



Floor Plan 1st Floor

TECHNICAL SPECIFICATIONS

Ceiling height
A: 4.40 m/B: 3.55 m

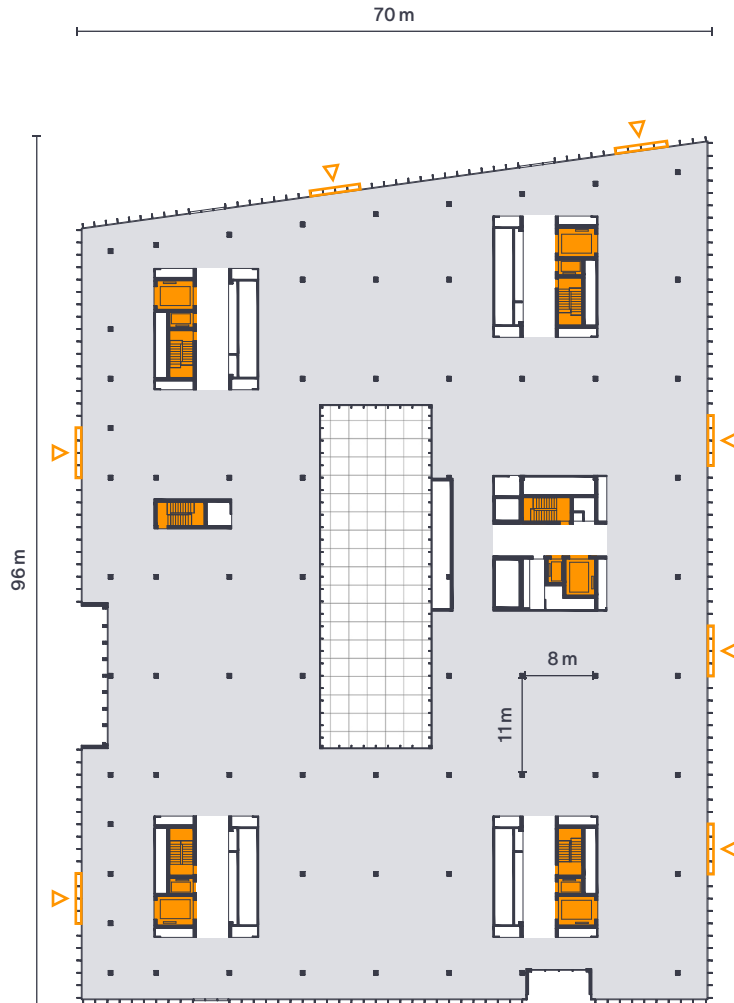
Floor load
1t/m²

■ Rental area (A: 5,030 m²/B: 4,990 m²)

■ Lifts and staircases

▤ Patio (A: 460 m²/B: 500 m²)

▷ Façade access points



Building



Building



Floor Plan 2nd Floor

TECHNICAL SPECIFICATIONS

Ceiling height
A: 4.40 m/B: 3.55 m

Floor load
1t/m²

- Rental area (A: 4,650 m²/B: 4,990 m²)
- Lifts and staircases
- Terrace (A: 370 m²)
- Façade access points



Building



Building



Floor Plan 3rd Floor

TECHNICAL SPECIFICATIONS

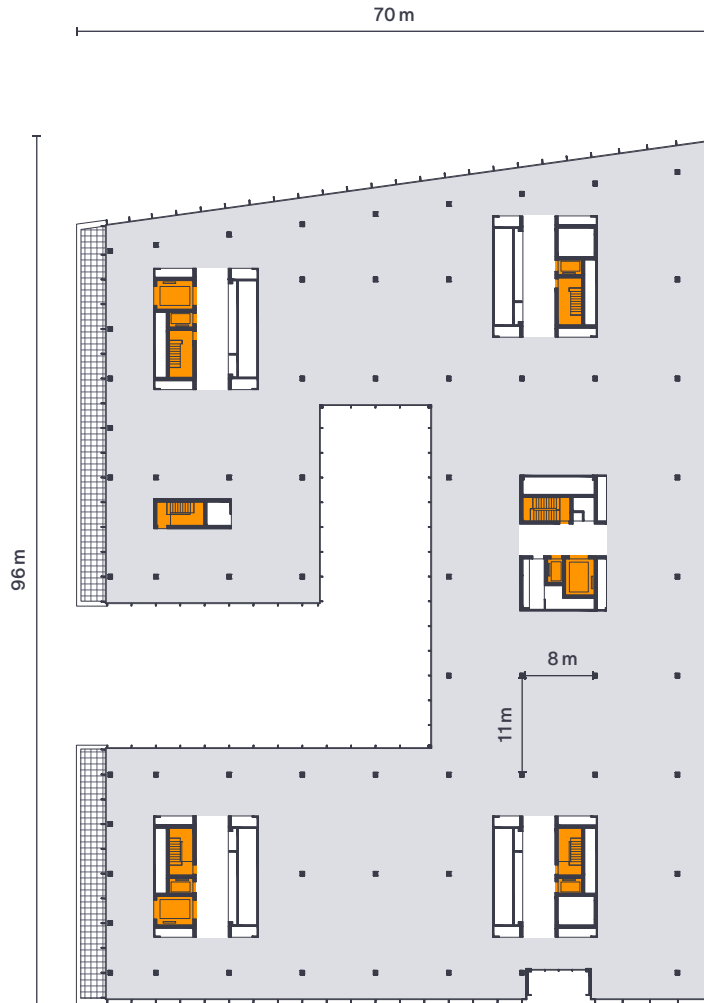
Ceiling height
3.00 m

Floor load
500 kg/m²

■ Rental area (A: 4,530 m²/B: 4,970 m²)

■ Lifts and staircases

■ Balcony (A: 160 m²)



Building



Building



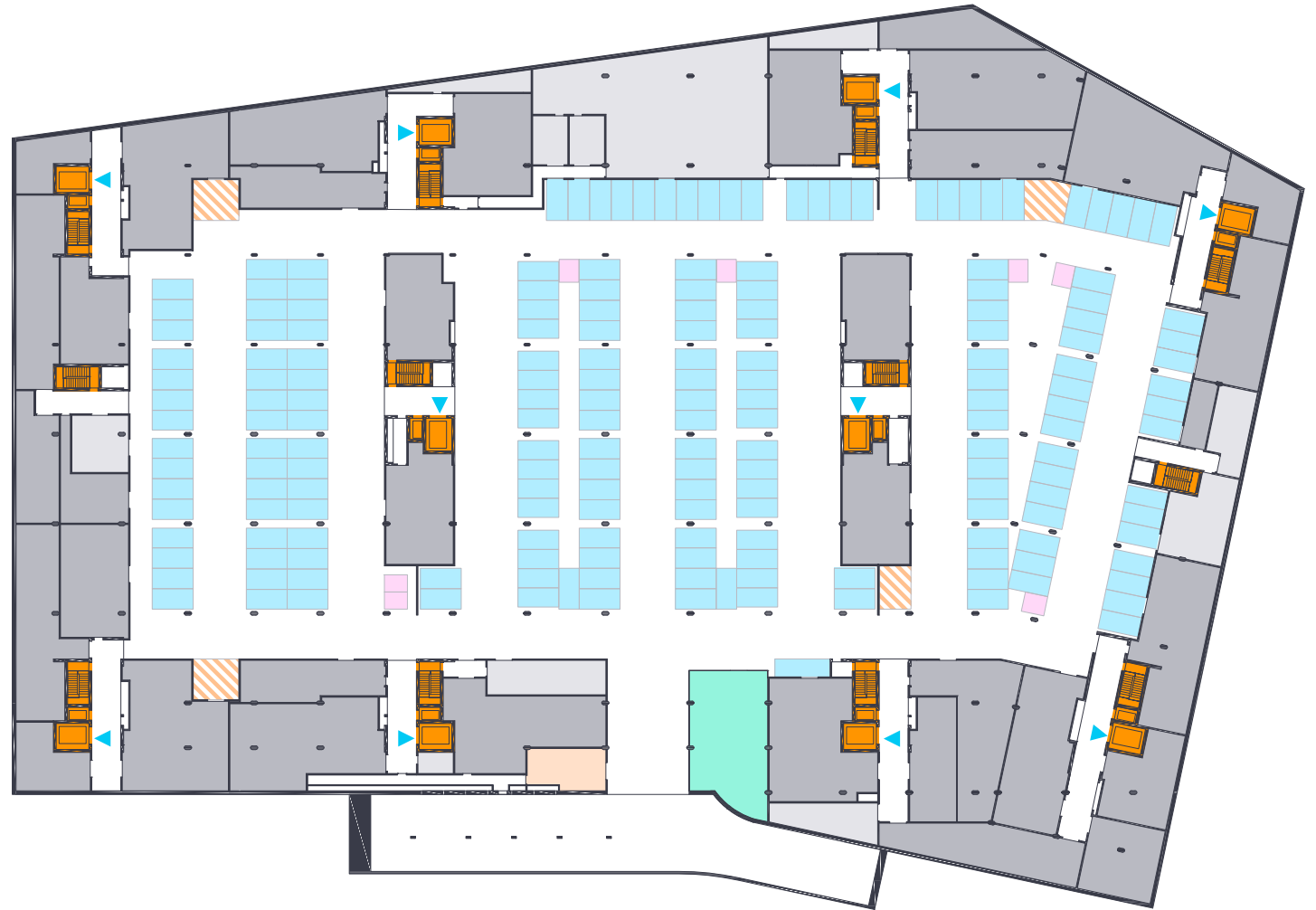
Floor Plan Basement -1

TECHNICAL SPECIFICATIONS

Ceiling height
4.40 m

Floor load
2 t/m²

- Storage/tenant technical areas (4,150 m²)
- Lifts and staircases
- Technical areas
- Concierge
- Delivery areas (h = 290cm)
- Car parking (193 spaces)
- Bicycle parking
- Small vehicle parking
- Access to cargo lifts



Floor Plan Basement -2

TECHNICAL SPECIFICATIONS

Ceiling height
3.30 m

Floor load
1t/m²

- Storage (1,500 m²)
- Lifts and staircases
- Technical areas
- Car parking (313 spaces)
- Small vehicle parking

