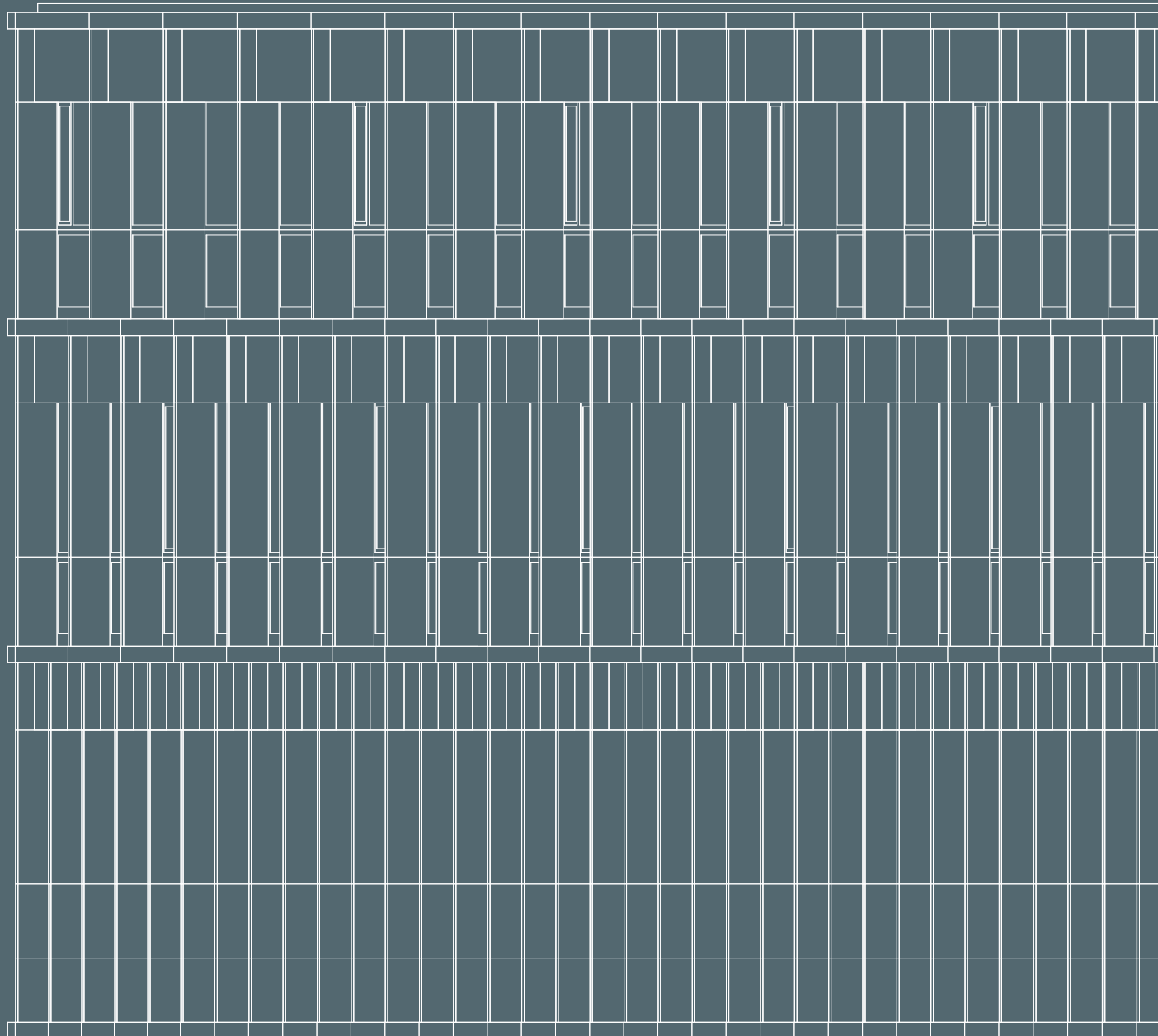




Indicative Building Plans



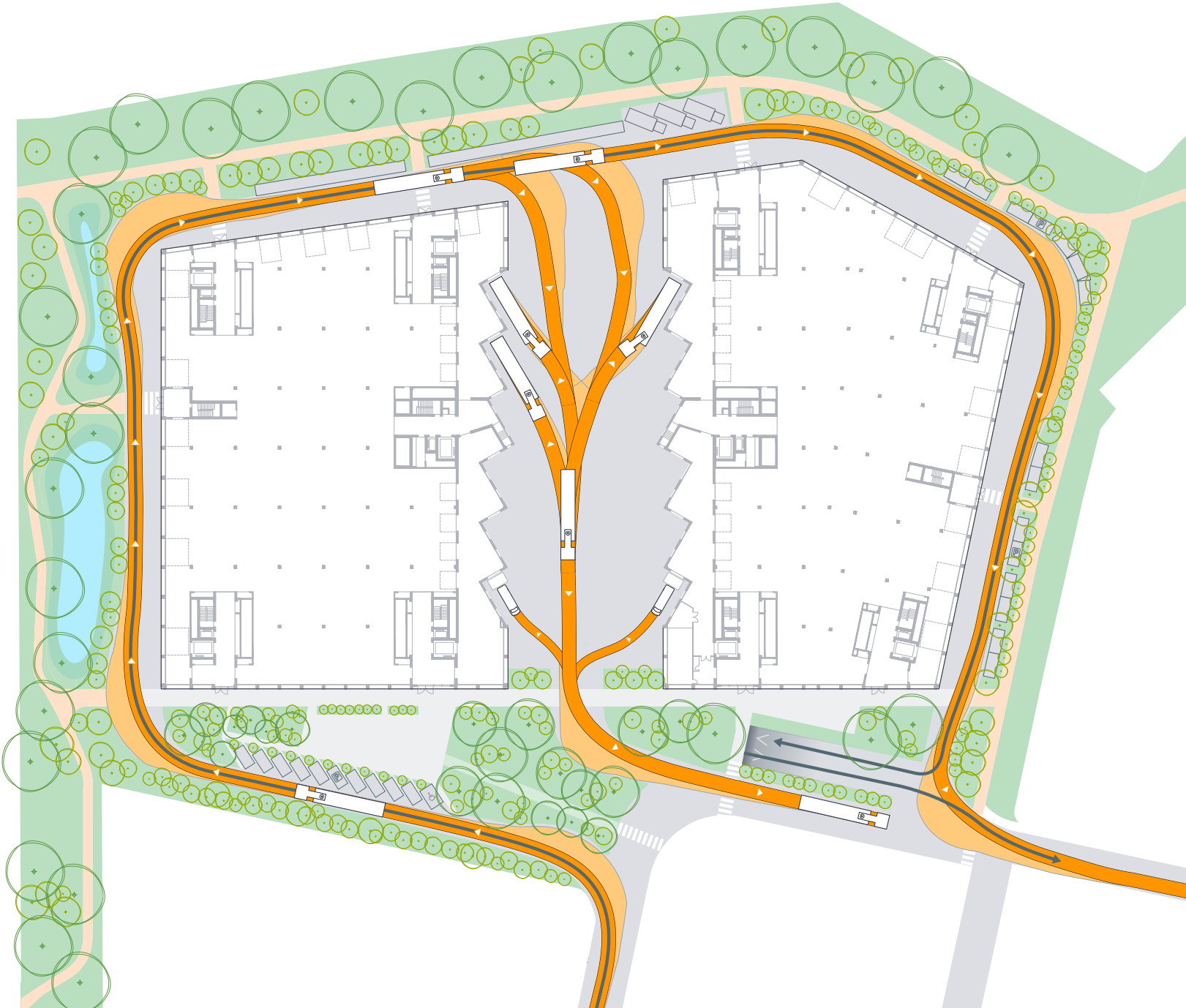
Situation Plan and HGV Access



Tractrix curves



Car paths

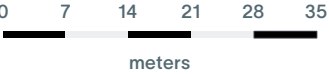


Floor Plan Ground Floor

TECHNICAL
SPECIFICATIONS

Ceiling height
5.80 m
Floor load
2 t/m²

- Rental area (A: 3,476 m²/B: 3,365 m²)
- Lifts and staircases
- Logistic area
- Concierge
- Terrace
- Tank storage (O₂, N₂, CO₂, etc.)
- Waste compactors
- Entrances
- Access to cargo lifts







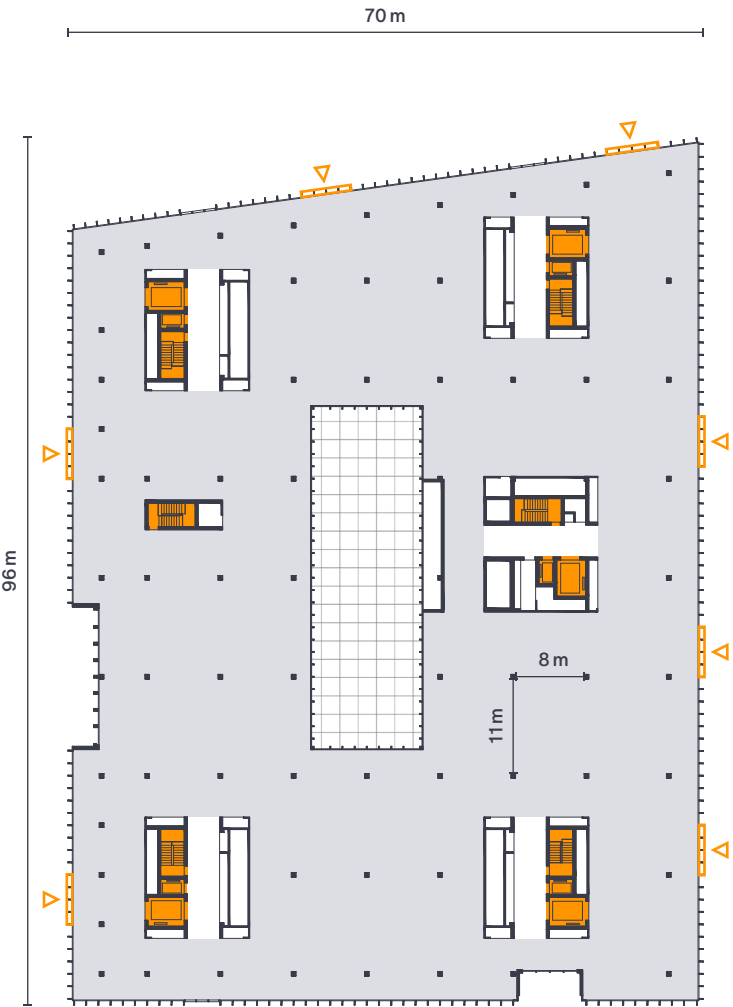
Floor Plan 1st Floor

TECHNICAL
SPECIFICATIONS

Ceiling height
A: 4.40 m/B: 3.55 m

Floor load
1t/m²

-  Rental area (A: 5,030 m²/B: 4,990 m²)
-  Lifts and staircases
-  Patio (A: 460 m²/B: 500 m²)
-  Façade access points



Building
A





Building
B

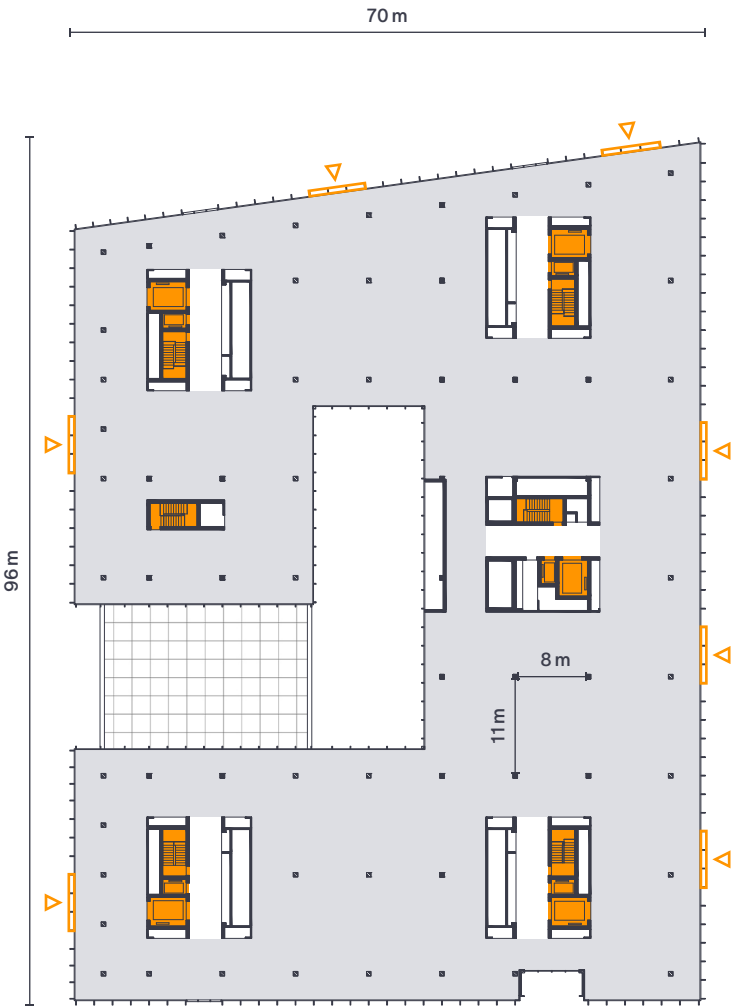
Floor Plan 2nd Floor

TECHNICAL
SPECIFICATIONS

Ceiling height
A: 4.40 m/B: 3.55 m

Floor load
1t/m²

-  Rental area (A: 4,650 m²/B: 4,990 m²)
-  Lifts and staircases
-  Terrace (A: 370 m²)
-  Façade access points



Building
A



Building
B






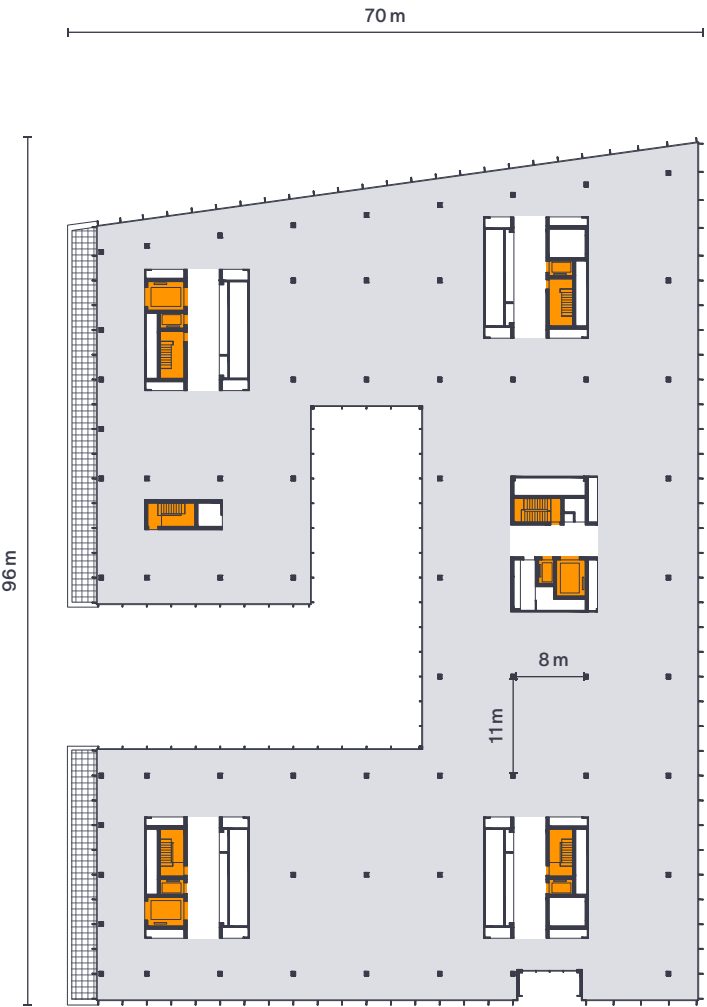
Floor Plan 3rd Floor

TECHNICAL
SPECIFICATIONS

Ceiling height
3.00 m

Floor load
500 kg/m²

-  Rental area (A: 4,530 m²/B: 4,970 m²)
-  Lifts and staircases
-  Balcony (A: 160 m²)



Building
A



Building
B

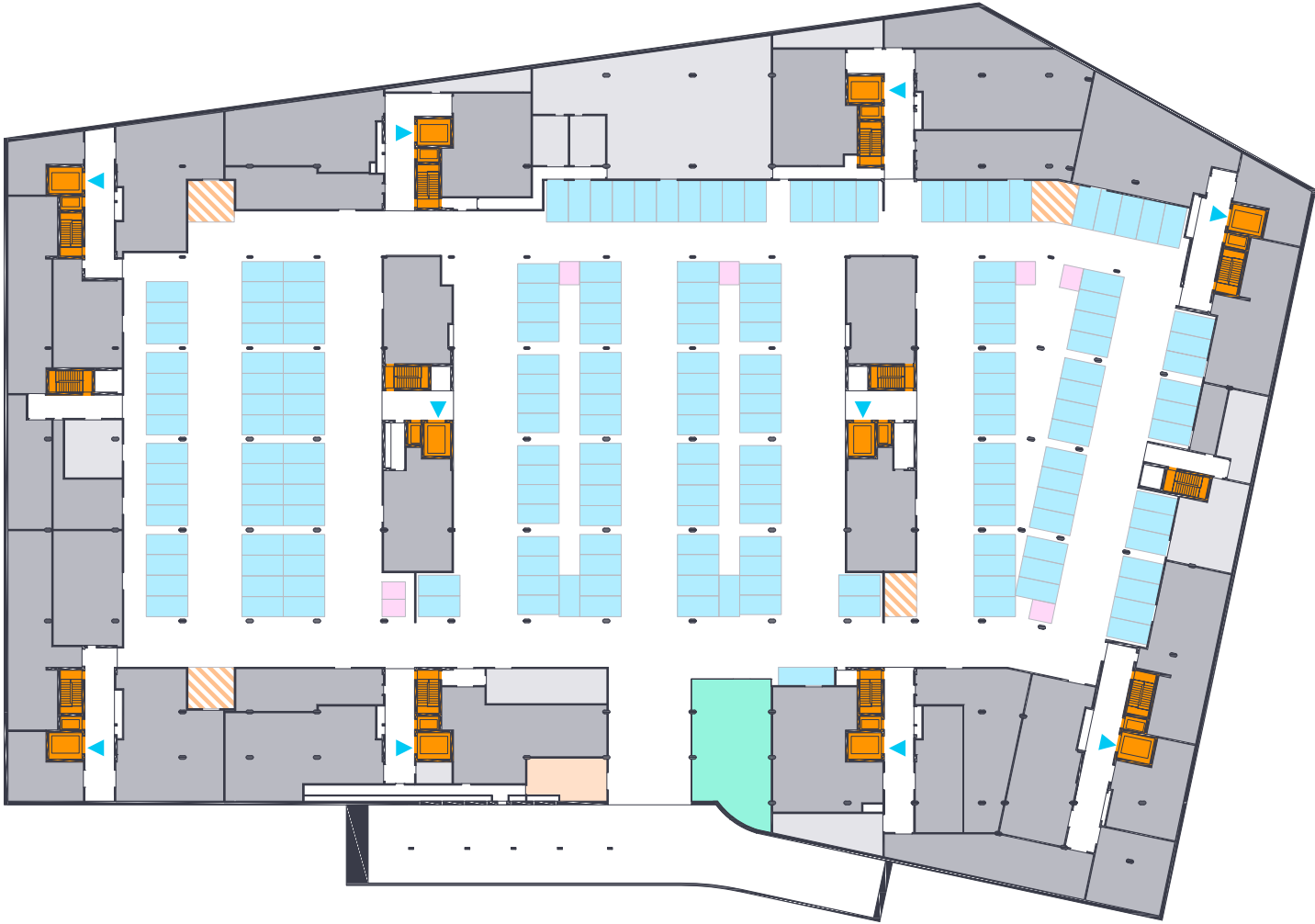


Floor Plan Basement -1

TECHNICAL
SPECIFICATIONS

Ceiling height
4.40 m
Floor load
2 t/m²

- Storage/tenant technical areas (4,150 m²)
- Lifts and staircases
- Technical areas
- Concierge
- Delivery areas (h = 290cm)
- Car parking (193 spaces)
- Bicycle parking
- Small vehicle parking
- Access to cargo lifts



Floor Plan Basement -2

TECHNICAL
SPECIFICATIONS

Ceiling height
3.30 m
Floor load
1t/m²

- Storage (1,500 m²)
- Lifts and staircases
- Technical areas
- Car parking (313 spaces)
- Small vehicle parking

